

Legislative Branch

The legislative branch: profile of the legislative branch, description of the legislative process, summary of 2001-02 legislation, and description of legislative committees and service agencies

Wisconsin's People



OFFICERS OF THE 2003 LEGISLATURE

SENATE

President Senator Alan J. Lasee
 President pro tempore Senator Robert T. Welch
 Chief clerk Honorable Donald J. Schneider
 Sergeant at arms Honorable Ted Blazel

Majority Party Officers

Minority Party Officers

Leader	Senator Mary E. Panzer	Senator Jon B. Erpenbach
Assistant leader	Senator David A. Zien	Senator Dave Hansen
Caucus chairperson	Senator Mary A. Lazich	Senator Robert W. Wirsch
Caucus vice chairperson	Senator Joseph Leibham	None

Chief Clerk: Mailing Address: P.O. Box 7882, Madison 53707-7882; Location: 17 West Main Street, Suite 401; Telephone: (608) 266-2517.

Sergeant at Arms: Mailing Address: P.O. Box 7882, Madison 53707-7882; Location: B35 South, State Capitol; Telephone: (608) 266-1801.

ASSEMBLY

Speaker Representative John G. Gard
 Speaker pro tempore Representative Stephen J. Freese
 Chief clerk Honorable Patrick E. Fuller
 Sergeant at arms Honorable Richard A. Skindrud

Majority Party Officers

Minority Party Officers

Leader	Representative Steven M. Foti	Representative James E. Kreuser
Assistant leader	Representative Jean L. Hundertmark	Representative Jon Richards
Caucus chairperson	Representative Daniel P. Vrakas	Representative Robert L. Turner
Caucus vice chairperson	Representative Glenn Grothman	Representative Gary E. Sherman
Caucus secretary	Representative Carol Owens	Representative Amy Sue Vruwink
Caucus sergeant at arms	Representative Jerry Petrowski	Representative Jennifer Shilling

Chief Clerk: Mailing Address: P.O. Box 8952, Madison 53708-8952; Location: 17 West Main Street, Suite 208; Telephone: (608) 266-1501.

Sergeant at Arms: Mailing Address: P.O. Box 8952, Madison 53708-8952; Location: 411 West, State Capitol; Telephone: (608) 267-9808.

LEGISLATIVE HOTLINE: Monday-Friday, 8:00 a.m.-5 p.m.; Telephone: Madison Area: 266-9960; Outside Madison Area: (800) 362-9472; TTY: (800) 228-2115.

LEGISLATIVE INTERNET ADDRESS: <http://www.legis.state.wi.us>

LEGISLATIVE BRANCH

A PROFILE OF THE LEGISLATIVE BRANCH

The legislative branch consists of the bicameral Wisconsin Legislature, made up of the senate with 33 members and the assembly with 99 members, together with the service agencies created by the legislature and the staff employed by each house. The legislature's main responsibility is to make policy by enacting state laws. Its service agencies assist it by performing fiscal analysis, research, bill drafting, auditing, statute editing, and information technology functions.

A new legislature is sworn into office in January of each odd-numbered year, and it meets in continuous biennial session until its successor is sworn in. The 2003 Legislature is the 96th Wisconsin Legislature. It convened on January 6, 2003, and will continue until January 3, 2005.

U.S. and Wisconsin Constitutions Grant Broad Legislative Powers. The power to determine the state's policies and programs lies primarily in the legislative branch of state government. According to the Wisconsin Constitution: "The legislative power shall be vested in a senate and assembly." This power is quite extensive, but certain limitations are imposed by the U.S. Constitution and the Wisconsin Constitution. In addition, the legislature's power is restricted by the governor's authority to veto legislation, but a veto may be overridden by a two-thirds vote in both houses of the legislature.

All actions taken by the legislature must conform with the U.S. Constitution. For example, the U.S. Congress has exclusive powers to regulate foreign affairs and coin money, and states are denied the power to make treaties with foreign countries. In addition, state legislation may not abridge the rights guaranteed in the U.S. Bill of Rights. Powers that are not granted exclusively to the U.S. Congress or denied the states are considered to be reserved for the individual states.

In addition to the boundaries set by the U.S. Constitution, the legislature's authority is also limited by the state constitution. For instance, the Wisconsin Constitution requires the legislature to establish as uniform a system of town government as practicable, prevents it from enacting private or special laws on certain subjects, and prohibits laws that would infringe on the rights of Wisconsin citizens, as protected by the Declaration of Rights of the Wisconsin Constitution.

Biennial Sessions: 4-Year Senate Terms; 2-Year Assembly Terms. Originally, members of the assembly served for one year, while senators served for 2 years. An 1881 constitutional amendment doubled the respective terms to the current 2 and 4 years and converted the legislature from annual to biennial sessions.

Since its adoption on March 13, 1848, the Wisconsin Constitution has provided that the membership of the assembly shall be not less than 54 nor more than 100, and the membership of the senate shall consist of not more than one-third nor less than one-fourth of the number of assembly members. The first legislature had 85 members – 19 senators and 66 assemblymen. (Assembly members were renamed "representatives to the assembly" in 1969.) The number increased several times until the legislature became a 133-member body in 1862, with the constitutionally permitted maximums of 33 in the senate and 100 in the assembly. Over a century later, membership dropped to 132 in the 1973 Legislature, when the number of representatives was reduced to 99 so that each of the 33 senate districts would encompass 3 assembly districts. This is the current number and structure.

THE WISCONSIN LEGISLATURE

Number of Positions 2003 Legislature: Senate: 33 members, 228 employees; Assembly: 99 members, 333 employees.

Total Budget 2001-03: \$88,582,200.

Constitutional Reference: Article IV.

Statutory Reference: Chapter 13, Subchapter I.

Election of Legislators. All members of the legislature are elected from single-member districts. At the general election on the first Tuesday after the first Monday in November of even-numbered years, the voters of Wisconsin elect all members of the assembly and approximately one-half of the senators. These legislators-elect assume office in January of the following odd-numbered year when they convene to open the new legislative session at the State Capitol, together with the “holdover” senators who still have 2 years remaining of their 4-year terms. When a midterm vacancy occurs in any legislative office, it is filled through a special election called by the governor.

The 33 senators are elected for 4-year terms from districts numbered 1 through 33. The 16 senators representing even-numbered districts are elected in the years in which a presidential election occurs. The 17 senators who represent odd-numbered districts are elected in the years in which a gubernatorial election is held.

Since statehood in 1848, the Wisconsin Constitution has required the legislature, after each U.S. decennial census, to redraw the districts for both houses “according to the number of inhabitants”. Thus, Wisconsin was following this practice long before the U.S. Supreme Court decided in 1962 that all states must redistrict according to the “one person, one vote” principle.

Under the campaign finance reporting law enacted by the 1973 Legislature, candidates for the legislature, as well as for other public offices, are required to make full, detailed disclosure of their campaign contributions and expenditures to the Elections Board, which was created by the same law. Limits are placed on the amounts of contributions received from individuals and various committees. State law also requires legislators and candidates for legislative office to file a statement of their economic interests with the state Ethics Board. A 1977 law authorized candidates for legislative office and statewide executive and judicial offices to receive public campaign funding from state revenues, funded by a \$1 check-off on state individual income tax returns.

Political Parties in the Legislative Process. Partisan political organizations play an important role in the Wisconsin legislative process. Since 1949, virtually all legislators have been affiliated with either the Democratic Party or the Republican Party. The strongest representation of other parties was between 1911 and 1937, when there were one or more Socialists in the legislature, and between 1933 and 1947, when the Progressives maintained an independent party. In fact, in 1937 the Progressive Party had a plurality in both houses.

Party organization in the legislature is based on the party group called the “caucus”. In each house, all members of a particular political party form that party’s caucus. Thus, there are four caucuses related to the party divisions in the two houses. The primary purpose of a caucus is to help party members maintain a unified position on critical issues. Party leaders, however, do not expect to secure party uniformity on every measure under consideration.

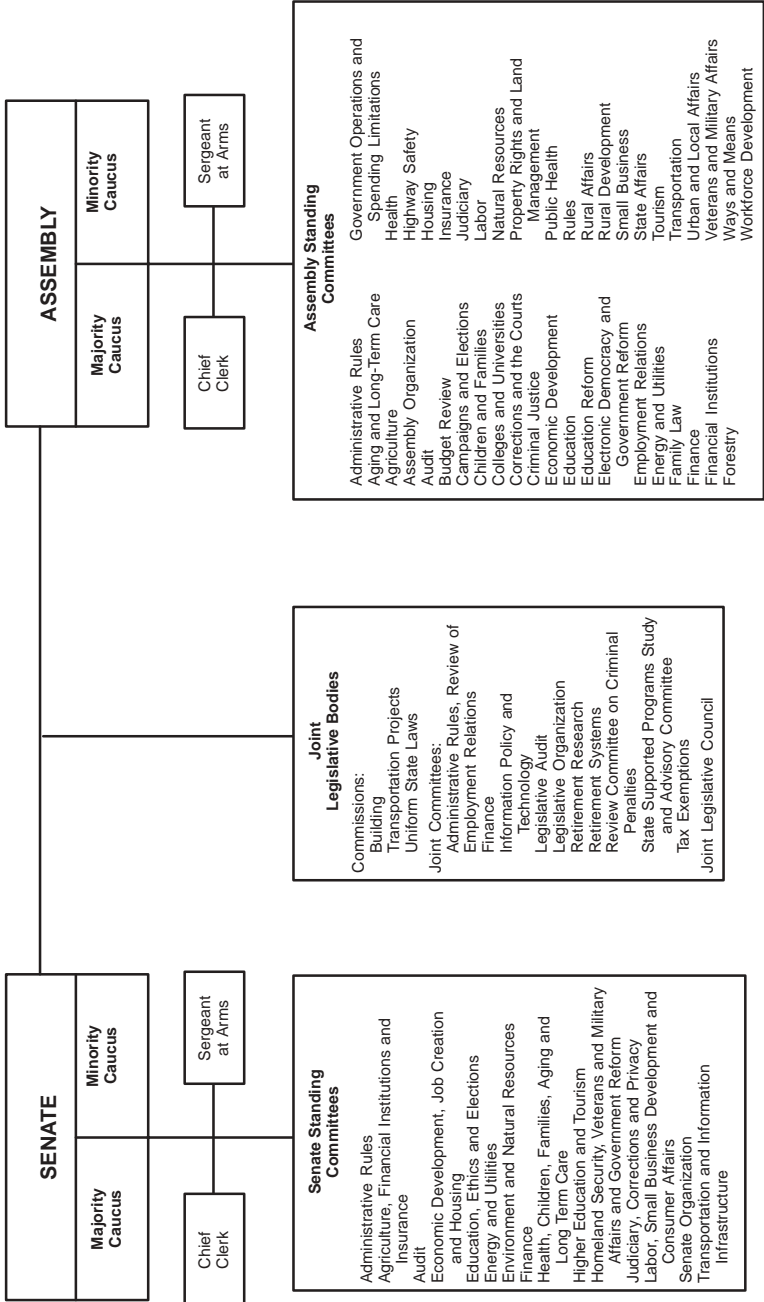
Caucus meetings may be held at regular intervals or whenever convened by party leaders, and occasionally the senate and assembly caucuses of the same party meet in joint caucus. A caucus meeting is scheduled shortly after the general election and before the opening of the session to select candidates for the various leadership positions in each house. Although each party caucus nominates a slate of officers, the positions are usually won by the nominees of the majority party when a vote is taken in the full house.

Legislative Officers and Leadership. The Wisconsin Constitution originally required the lieutenant governor to serve as president of the senate. As a result of an April 1979 constitutional amendment, the senate now selects its own presiding officer from among its members. When the president of the senate is absent or unable to preside, the president pro tempore, elected from the membership, may preside as substitute president.

The presiding officer of the assembly is the speaker, who is elected by majority vote of the assembly membership. The speaker supervises all other officers of the chamber and appoints

WISCONSIN LEGISLATURE

LEGISLATURE



committees. When the speaker is absent or unable to preside, the speaker pro tempore, who is also elected from the membership, may substitute.

Each party in each house elects floor leaders, respectively known as the majority leader and assistant majority leader and the minority leader and assistant minority leader. To varying degrees, these party officers play powerful roles in directing and coordinating legislative activities.

Each house has a chief clerk and a sergeant at arms, who are elected by, but are not themselves members of, the legislature. The chief clerk serves as the clerk of the house when it is in session and supervises the preparation of legislative records. In conjunction with the presiding officers, the chief clerks supervise personnel and administrative functions for their respective houses. The sergeants at arms maintain order in and about the chambers and supervise the messengers.

Legislative Compensation. When the 2003 Legislature convened on January 6, 2003, all members were eligible for a salary of \$45,569 per year. The process for setting legislative salaries requires the Secretary of the Department of Employment Relations to submit proposed changes as part of the state compensation plan to the legislature's Joint Committee on Employment Relations. If the committee approves the plan, the new salary goes into effect for all legislators at the next inauguration. The committee also sets the salaries of the chief clerks and the sergeants at arms of the two houses within a range established under civil service procedures.

Members of the legislature, the chief clerks, and the sergeants at arms are entitled to an allowance not to exceed \$88 per day ("per diem") for living expenses for each day spent in Madison on legislative business if they certify by affidavit that they have established temporary residence at the state capital. Those who choose not to establish temporary residence are entitled to half that amount. All members are reimbursed for one weekly round trip from the capital to their homes.



One of the proudest moments for a newly elected legislator and her family occurs on Inauguration Day. Representative Lena Taylor is sworn in after winning a special election in April 2003, while her family looks on approvingly. Supreme Court Justice David Prosser, a former Assembly Speaker, administers the oath of office. (Brent Nicastro, Assembly Photographer)

2003-2004 SESSION SCHEDULE

January 6, 2003	2003 Inauguration
January 7, 2003	Floorperiod
January 28-30, 2003	Floorperiod
February 18-20, 2003	Floorperiod
March 11-20, 2003	Floorperiod
April 24, 2003	Deadline for sending bills to governor
April 29-May 8, 2003	Floorperiod
May 28-June 27, 2003 (or until passage of budget)	Floorperiod
August 14, 2003	Deadline for sending nonbudget bills to governor*
September 23-October 2, 2003	Floorperiod
October 21-23, 2003	Floorperiod
November 4-13, 2003	Floorperiod
December 11, 2003	Deadline for sending bills to governor
January 20-February 5, 2004	Floorperiod
February 24-March 11, 2004	Last general-business floorperiod
April 15, 2004	Deadline for sending bills to governor
April 27-29, 2004	Limited-business floorperiod
May 4, 2004	Deadline for sending bills to governor
May 11-12, 2004	Veto review floorperiod
May 26, 2004	Deadline for sending bills to governor
May 13, 2004-January 3, 2005	Interim committee work
January 3, 2005	2005 Inauguration

Any floorperiod may be convened earlier or extended beyond its scheduled dates by majority action of the membership or the organization committees of the two houses. The Committee on Senate Organization may schedule sessions outside floorperiods for senate action on gubernatorial nominations, but the assembly does not have to hold skeleton sessions during these appointment reviews. The legislature may call itself into extraordinary session or the governor may call a special session during a floorperiod or on any intervening day.

*Deadline for budget bill will depend on bill's passage.

Source: 2003 Senate Joint Resolution 1.

They also are reimbursed for expenses incurred while serving as legislative members of a state or interstate agency or when specifically authorized to attend meetings of such agencies as non-members. The Speaker of the Assembly also receives a stipend, currently \$25 per month.

Legislators receive allowances for their office and mailing expenses while attending legislative sessions. If the legislature is in session three or fewer days in a particular month, legislative leadership may authorize an interim expense allowance to cover postage and clerical assistance (\$25 for representatives and \$75 for senators).

Legislative Sessions. Members of each new legislature convene in the State Capitol at 2 p.m. on the first Monday in January of each odd-numbered year to take the oath of office, select officers, and organize for business. The initial meeting occurs on January 3 if the first Monday falls on January 1 or 2. The previous legislature usually holds its adjournment meeting on the same day, just prior to the convening of the new legislature. Thus, there is almost no interim between the two.

Originally, the constitution required the legislature to meet once during each annual session. An 1881 amendment restricted the body to one meeting in the two years comprising the biennial session. As a result, the legislature scheduled its meetings in a continuing biennial session with periodic recesses. It would meet in regular session from January through June of the odd-numbered year and then recess after completing the major portion of its work. It then reconvened from time to time in the remainder of the biennium, as needed. When a legislature had completed its work for the biennium, it adjourned *sine die*, meaning it did not set a date to reconvene. At that point, the 2-year session was over, and the legislature could not return unless called into special session by the governor.

In 1968, the state constitution was amended to permit the legislature to determine its own meeting schedule for the biennium. Beginning with the 1971 Legislature, annual sessions were formally initiated by law with the requirement that regular sessions begin in January of each year. Early in each biennium, the Joint Committee on Legislative Organization develops a work schedule for the 2-year period and submits it to the legislature in the form of a joint resolution. The

2003-2004 session schedule, for example, is structured around 13 floorperiods, with periods of committee work interspersed throughout the biennium.

Meetings of the respective houses of the legislature are held in the senate and assembly chambers in the State Capitol. Usually, the legislature meets Tuesday through Thursday of each week. Toward the end of many floorperiods, however, the houses may meet continuously during the day Tuesday through Friday and hold evening sessions. Unless otherwise ordered, daily sessions begin at 10 a.m. for the senate and 9 a.m. for the assembly (10 a.m. on the first legislative day of the week). Daily sessions usually extend beyond noon, especially later in the legislative session. If business permits, afternoons may be devoted to committee hearings or a combination of hearings and late afternoon sessions.

As illustrated in the foregoing description, the word “session” has several meanings. The “legislative session” usually refers to the 2-year period that comprises a particular legislature. If the legislature is “not in session”, that may mean it is in an interim period between floorperiods. Saying that either the senate or assembly is “not in session”, however, may mean that the house has adjourned for the day or that it has recessed until a later hour of the same day.

Extraordinary and Special Sessions. Beginning in 1962, the legislature adopted procedures that would permit it to reassemble through a petition signed by a majority of the members of each house. An amendment to the 1977 Joint Rules codified this procedure by allowing the legislature to call itself into an “extraordinary session”. The legislature may convene in extraordinary session or extend a floorperiod at the direction of the majority of the members of the organization committee in each house, by passage of a joint resolution, or by a joint petition signed by the majority of members of each house.

In addition, the governor has the authority to call a “special session”, in which the legislature can act only upon matters specifically mentioned in the governor’s call. As of the adjournment of the 2001 Legislature, there had been 77 special sessions since Wisconsin became a state in 1848. It is possible for a regular session and a special session to be scheduled at different times during a week or even on the same day. Because special sessions may occur at any time during the legislative biennium, enactments resulting from a special session are now numbered within the regular sequence of biennial laws.

Session Records. Each house of the legislature keeps a record of its actions known as the daily journal. This record differs from the federal *Congressional Record* in that it does not provide a transcript or abbreviated account of speeches made on the floor. It is, instead, an outline record of the business before the house, including procedural actions taken on all measures considered on that particular day, roll call votes, communications received from the governor or the other house, special committee reports, and miscellaneous items.

The *Bulletin of the Proceedings of the Wisconsin Legislature* is generally issued weekly during floorperiods and less often during committee work periods. Each issue contains a cumulative record of actions taken on bills, joint resolutions, and resolutions by both houses, listed by bill or resolution number. It includes a subject and author index to legislation; a subject index to the legislative journals; a subject index to new laws and enrolled bills and joint resolutions; a numeric listing of statute sections affected by these laws; changes made to statutory court rules by supreme court orders; and the complete text of constitutional amendments ratified since the most recent publication of the *Wisconsin Statutes*. Another part indexes and reports action on administrative rule changes. The *Bulletin* also includes a directory of lobbying organizations, licensed lobbyists, and legislative liaisons from state agencies.

Each week during the session, the chief clerks jointly issue a *Weekly Schedule of Committee Activities*, listing the business scheduled by the various committees for the coming week, together with the time and place of each hearing and advanced notices on hearings deemed to be of special interest. Each house also issues a daily calendar indicating the business to be taken up on the floor that day.

Complete texts of bills, amendments, and resolutions; bill histories; a subject index to legislation; hearing notices and calendars; and other information on the legislature are available on the Internet at www.legis.state.wi.us. Reference copies of all these legislative documents are available at the Legislative Reference Bureau, and numerous libraries throughout the state also receive



With Republicans winning a majority in the Senate, Alan J. Lasee (left) succeeded Fred Risser as Senate President in 2003. (Richard G.B. Hanson II, Senate Photographer)

them. Individuals and organizations may subscribe to receive printed versions of legislative documents. (See the table on Legislative Service in this section for fees and details.)

Standing Committees. To a large extent, the legislature does its work in committees. In the 2003 Legislature, the senate has 15 standing committees, the assembly 42, and there are 11 joint standing committees, composed of members from both houses. Joint standing committees are created in the statutes and membership is determined by law. Regular standing committees are created under the rules of their respective houses.

The standing committees in the individual houses consist of legislators only and operate throughout the biennium. Each committee is concerned with one or more broad subject areas related to government functions. It may hold public hearings on measures introduced in the legislature, conduct studies and investigations, and generally review matters within its area of concern. Legislative committees may also appoint subcommittees or study groups.

Senate rules require that each senator serve on at least one standing committee, and the Committee on Senate Organization sets the number of members on each committee. Usually the two major political parties are represented on the committees in proportion to their membership in the senate. The chairperson of the organization committee, who is also the majority leader, makes the appointments to committees. Committee nominations for individual members of the minority party are proposed by that party. An exception to the general method of appointment is the Committee on Senate Organization. It is an *ex officio* committee, consisting of members in leadership positions: the president, the majority and minority leaders, and the assistant leaders.

In the assembly, the speaker determines the number of members of each committee and the division of membership between the majority and minority parties. Under assembly rules, the speaker appoints majority party committee members directly and minority party committee members upon nomination by the assembly minority leader. Customarily, every member serves on at least one committee, although the rules are silent on the distribution of committee assignments. The speaker may appoint himself or herself to one or more standing committees and is a nonvoting member of all others. By rule, the Committee on Assembly Organization is composed of the speaker, the speaker pro tempore, the majority and minority leaders, the assistant leaders, and the caucus chairpersons. The Committee on Rules includes all members of the organization committee plus one majority and one minority party member appointed by the speaker.

Temporary Special Committees. In addition to the standing committees, special committees may be appointed during a legislative session to study specific problems or conduct designated investigations and report to the legislature before the conclusion of the session.

Prior to 1947, the legislature created interim committees to investigate particular subjects. They functioned between legislative sessions and reported their findings and recommendations to the next legislature. Since 1947, almost all interim studies have been referred to the Joint Legislative Council, which coordinates a program of study and investigation after deciding which topics it will consider. The council usually appoints separate committees to study specific matters, and these committees include nonlegislative members.

Employees of the Legislature. Each house of the legislature provides staff services, which are managed by the respective chief clerk and sergeant at arms under the supervision of the Committee on Senate Organization or the speaker of the assembly. Although senate and assembly employees are not part of the classified service, they are paid in accordance with the compensation and classification plan established for employees in the classified service and within pay ranges approved by the Joint Committee on Legislative Organization.

The legislature employs five service agencies and the Joint Legislative Council staff to provide financial and program audits, fiscal information and analysis, bill drafting, research services, legal counsel and policy assistance, computer and telecommunications services, and statutory revision.



The press provides a vital link between citizens and their government. At a press conference held on June 20, 2003, following Senate action on the 2003-04 biennial budget, Governor Doyle expresses his reaction. (Brent Nicastro, Assembly Photographer)

THE LEGISLATURE ON THE INTERNET

Legislative Information

The Wisconsin Legislature's Internet home page at <http://www.legis.state.wi.us> provides extensive information regarding the legislature and the legislative process. Follow the links under **2003-2004 Legislative Activity** to access bills, acts, statutes, calendars, and other legislative activity during current and past sessions. Full text documents, including the Wisconsin Constitution, are also available online. The **Spotlight** link reports on-going legislative activity. In addition, the legislative **service agencies** have individual home pages where their publications can be downloaded.

The **Folio** search engine enables users to search for specific acts, bills, or statutes from 1995 to date. Folio may be accessed through the legislature's home page or at <http://folio.legis.state.wi.us>.

The legislature's home page links to individual legislator's home pages, which include information such as e-mail addresses, district maps, committees, and biographies. Some legislators also provide brief audio clips and personally designed pages to communicate with their constituents.

Live Video and Audio

The legislature offers a live audio service for those who want to track floor debate as it happens. Separate **InSession** links on the legislature's home page provide detailed directions for listening to discussions in the assembly and senate when they are on the floor. The links include the calendars for their respective houses. The assembly also provides a live video stream of the floor session under the **Assembly Chamber Video** link. Some committees, including the Joint Committee on Finance, provide audio links for their hearings.

NEWS MEDIA CORRESPONDENTS ACCREDITED TO THE 2003 LEGISLATURE January 29, 2003

Organization	Correspondents	Telephone
Newspaper and Wire Services		
Appleton Post-Crescent	Ben Jones	255-9256
Associated Press	Jenny Price, Todd Richmond, J.R. Ross	255-3679
Badger Herald	John Buchel, Cristina Daglas	257-4712
Capital Times	Dave Callender, Matt Pommer, Anita Weier	252-6475/252-6429
Capitol News Service	Stan Milam	251-8585
Green Bay Press-Gazette	John Dipko	255-9254
Isthmus	Melanie Conklin	251-5627
Lee Newspapers/WSJ	Tom Sheehan	252-6198/(800) 362-8333, ext. 6198
Milwaukee Journal Sentinel	Dennis Chaptman, Dick Jones, Steve Walters	258-2262/258-2274
Wheeler News Service	Tom Pattison	(800) 843-4346
Wheeler Reports	George Coburn, Gwyn Guenther, Dick Wheeler	287-0130
Wisconsin Catholic Newspapers	John Huebscher	257-0004
Wisconsin State Journal	Phil Brinkman, Scott Milfred	252-6145/252-6129
Radio and Television		
WIBA-AM and FM (Madison)	John Colbert	251-1978/274-2995
WISC-TV (Madison)	Colin Benedict	277-5246
WKOW-TV (Madison)	Jennifer Schwarz	273-2727
WMTV-TV (Madison)	Paul Blume	274-1500
WNWC-FM (Madison)	Gordon Govier, Mike Powers	271-1025
WOLX-FM (Madison)	Adam Elliot	826-0077
WTDY-AM (Madison)	Robin Colbert, Tim Morrissey, Rich Schuh	271-1301
Wisconsin Public Radio	Benson Gardner, Shamane Mills	265-3002/263-7985
Wisconsin Radio Network	Doug Cunningham, Dale Forbis, Bob Hague, Jackie Johnson	251-3900
Wisconsin Public Television	Kathy Bissen, Art Hackett, Steve Jandacek, Andy Moore	263-2417/263-2121
Internet News Service		
Wisconsin Eye (wiseye.org)	Jeff Roberts	255-1000
Wispolitics.com	Jeff Mayers	441-8418

Source: Assembly Sergeant at Arms.

2000 POPULATION OF LEGISLATIVE DISTRICTS
For Districts Promulgated May 30, 2002, by the
U.S. District Court for the Eastern District of Wisconsin¹
2000 State Population – 5,363,675

District	2000 Population	Deviation from Ideal ²		District	2000 Population	Deviation from Ideal ²	
		Total	Percent			Total	Percent
SD-1	162,285	- 251	- 0.2%	SD-18	162,388	- 148	- 0.1%
AD-1	53,973	- 206	- 0.4	AD-52	54,300	+ 121	+ 0.2
AD-2	54,191	+ 12	+ 0.0	AD-53	54,036	- 143	- 0.3
AD-3	54,121	- 58	- 0.1	AD-54	54,052	- 127	- 0.2
SD-2	162,546	+ 10	+ 0.0	SD-19	161,992	- 544	- 0.3
AD-4	54,428	+ 249	+ 0.5	AD-55	53,872	- 307	- 0.6
AD-5	53,950	- 229	- 0.4	AD-56	54,199	+ 20	+ 0.0
AD-6	54,168	- 11	- 0.0	AD-57	53,921	- 258	- 0.5
SD-3	162,454	- 82	- 0.1	SD-20	162,035	- 501	- 0.3
AD-7	54,176	- 3	- 0.0	AD-58	53,922	- 257	- 0.5
AD-8	54,074	- 105	- 0.2	AD-59	54,138	- 41	- 0.1
AD-9	54,204	+ 25	+ 0.1	AD-60	53,975	- 204	- 0.4
SD-4	162,528	- 8	- 0.0	SD-21	162,525	- 11	- 0.0
AD-10	54,312	+ 133	+ 0.3	AD-61	54,305	+ 126	+ 0.2
AD-11	53,971	- 208	- 0.4	AD-62	54,049	- 130	- 0.2
AD-12	54,245	+ 66	+ 0.1	AD-63	54,171	- 8	- 0.0
SD-5	162,347	- 189	- 0.1	SD-22	162,605	+ 69	+ 0.0
AD-13	53,940	- 239	- 0.4	AD-64	54,480	+ 301	+ 0.6
AD-14	54,596	+ 417	+ 0.8	AD-65	54,017	- 162	- 0.3
AD-15	53,811	- 368	- 0.7	AD-66	54,108	- 71	- 0.1
SD-6	162,689	+ 153	+ 0.1	SD-23	162,560	+ 24	+ 0.0
AD-16	54,349	+ 170	+ 0.3	AD-67	54,033	- 146	- 0.3
AD-17	54,204	+ 25	+ 0.1	AD-68	54,140	- 39	- 0.1
AD-18	54,136	- 43	- 0.1	AD-69	54,387	+ 208	+ 0.4
SD-7	162,791	+ 255	+ 0.2	SD-24	162,637	+ 101	+ 0.1
AD-19	54,272	+ 93	+ 0.2	AD-70	53,885	- 294	- 0.5
AD-20	54,217	+ 38	+ 0.1	AD-71	54,495	+ 316	+ 0.6
AD-21	54,302	+ 123	+ 0.2	AD-72	54,257	+ 78	+ 0.1
SD-8	162,076	- 460	- 0.3	SD-25	162,355	- 181	- 0.1
AD-22	54,361	+ 182	+ 0.3	AD-73	54,507	+ 328	+ 0.6
AD-23	53,867	- 312	- 0.6	AD-74	53,867	- 312	- 0.6
AD-24	53,848	- 331	- 0.6	AD-75	53,981	- 198	- 0.4
SD-9	161,775	- 761	- 0.5	SD-26	162,882	+ 346	+ 0.2
AD-25	53,825	- 354	- 0.7	AD-76	54,619	+ 440	+ 0.8
AD-26	54,043	- 136	- 0.3	AD-77	54,158	- 74	- 0.0
AD-27	53,907	- 272	- 0.5	AD-78	54,105	- 74	- 0.1
SD-10	162,994	+ 458	+ 0.3	SD-27	162,363	- 173	- 0.1
AD-28	54,404	+ 225	+ 0.4	AD-79	54,562	+ 383	+ 0.7
AD-29	54,356	+ 177	+ 0.3	AD-80	53,978	- 201	- 0.4
AD-30	54,234	+ 55	+ 0.1	AD-81	53,823	- 356	- 0.7
SD-11	162,286	- 250	- 0.2	SD-28	162,837	+ 301	+ 0.2
AD-31	54,423	+ 244	+ 0.5	AD-82	54,545	+ 366	+ 0.7
AD-32	54,103	- 76	- 0.1	AD-83	54,262	+ 83	+ 0.2
AD-33	53,760	- 419	- 0.8	AD-84	54,030	- 149	- 0.3
SD-12	162,618	+ 82	+ 0.1	SD-29	162,313	- 223	- 0.1
AD-34	54,275	+ 96	+ 0.2	AD-85	54,443	+ 264	+ 0.5
AD-35	54,165	- 14	- 0.0	AD-86	53,845	- 334	- 0.6
AD-36	54,178	- 1	- 0.0	AD-87	54,025	- 154	- 0.3
SD-13	163,262	+ 726	+ 0.4	SD-30	162,709	+ 173	+ 0.1
AD-37	54,045	- 134	- 0.2	AD-88	54,095	- 84	- 0.2
AD-38	54,602	+ 423	+ 0.7	AD-89	54,407	+ 228	+ 0.4
AD-39	54,615	+ 436	+ 0.8	AD-90	54,207	+ 28	+ 0.1
SD-14	162,414	- 122	- 0.1	SD-31	163,370	+ 834	+ 0.5
AD-40	53,966	- 213	- 0.4	AD-91	54,596	+ 417	+ 0.8
AD-41	54,242	+ 63	+ 0.1	AD-92	54,434	+ 255	+ 0.5
AD-42	54,206	+ 27	+ 0.1	AD-93	54,340	+ 161	+ 0.3
SD-15	162,267	- 269	- 0.2	SD-32	163,068	+ 532	+ 0.3
AD-43	53,869	- 310	- 0.6	AD-94	54,135	- 44	- 0.1
AD-44	54,264	+ 85	+ 0.2	AD-95	54,625	+ 446	+ 0.8
AD-45	54,134	- 45	- 0.1	AD-96	54,308	+ 129	+ 0.2
SD-16	162,468	- 68	- 0.0	SD-33	162,474	- 62	- 0.0
AD-46	54,206	+ 27	+ 0.0	AD-97	54,411	+ 232	+ 0.4
AD-47	54,313	+ 134	+ 0.3	AD-98	54,039	- 140	- 0.3
AD-48	53,949	- 230	- 0.4	AD-99	54,024	- 155	- 0.3
SD-17	162,762	+ 226	+ 0.1				
AD-49	54,133	- 46	- 0.1				
AD-50	54,355	+ 176	+ 0.3				
AD-51	54,274	+ 95	+ 0.2				

¹The court amended its original order of May 22, 2002 (*Baumgart v. Wendelberger*, No. 01-C-121) on May 30 and July 11, 2002. These statistics reflect the changes.

²Ideal Senate District: 162,536, mean deviation 2002, 260 (0.2%).

Ideal Assembly District: 54,179, mean deviation 2002, 170 (0.3%).

Source: U.S. Bureau of the Census P.L. 94-171 2000 Redistricting Data. Deviations and percentages computed by the Wisconsin Legislative Reference Bureau.